

Jacob Flexible Connection / Ancillary Components

Adapter Flanges

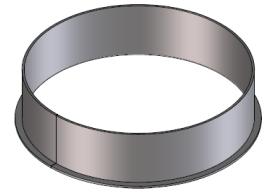
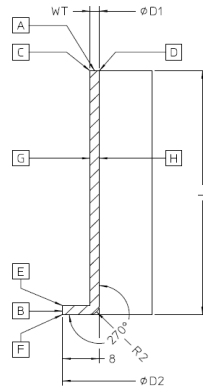
Size Table



Length : 15 mm

Surface : Glass Bead Blasted

Material : AISI 304 / DIN 1.4301



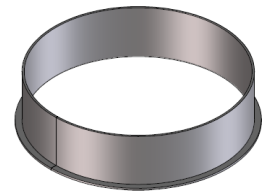
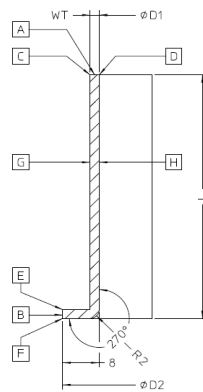
Article Nr.	Description	Material	D1	WT	OD	D2	L	Tolerance
801979	TFL-060-15	SS304 / DIN 1.4301 - Glass Bead Blasted	57	1,5	60	73	15	+/- 2,0mm
800723	TFL-080-15	SS304 / DIN 1.4301 - Glass Bead Blasted	78	1,5	81	94	15	+/- 2,0mm
800724	TFL-100-15	SS304 / DIN 1.4301 - Glass Bead Blasted	99	2,0	103	115	15	+/- 2,0mm
800725	TFL-120-15	SS304 / DIN 1.4301 - Glass Bead Blasted	119	2,0	123	135	15	+/- 2,0mm
800728	TFL-140-15	SS304 / DIN 1.4301 - Glass Bead Blasted	135	2,0	139	151	15	+/- 2,0mm
800441	TFL-150-15	SS304 / DIN 1.4301 - Glass Bead Blasted	149	2,0	153	165	15	+/- 2,0mm
800621	TFL-175-15	SS304 / DIN 1.4301 - Glass Bead Blasted	174	2,0	178	190	15	+/- 2,0mm
800061	TFL-200-15	SS304 / DIN 1.4301 - Glass Bead Blasted	199	2,0	203	215	15	+/- 2,0mm
800437	TFL-224-15	SS304 / DIN 1.4301 - Glass Bead Blasted	219	2,0	223	235	15	+/- 2,0mm
800062	TFL-250-15	SS304 / DIN 1.4301 - Glass Bead Blasted	249	2,0	253	265	15	+/- 2,0mm
800339	TFL-280-15	SS304 / DIN 1.4301 - Glass Bead Blasted	276	2,0	280	292	15	+/- 2,0mm
800113	TFL-300-15	SS304 / DIN 1.4301 - Glass Bead Blasted	299	2,0	303	315	15	+/- 2,0mm
800333	TFL-315-15	SS304 / DIN 1.4301 - Glass Bead Blasted	311	2,0	315	327	15	+/- 2,0mm
800114	TFL-350-15	SS304 / DIN 1.4301 - Glass Bead Blasted	349	2,0	352	365	15	+/- 2,0mm
800925	TFL-400-15	SS304 / DIN 1.4301 - Glass Bead Blasted	398	2,0	402	414	15	+/- 2,0mm
800923	TFL-450-15	SS304 / DIN 1.4301 - Glass Bead Blasted	448	2,0	452	464	15	+/- 2,0mm
800848	TFL-500-15	SS304 / DIN 1.4301 - Glass Bead Blasted	498	2,0	502	514	15	+/- 2,0mm
801980	TFL-560-15	SS304 / DIN 1.4301 - Glass Bead Blasted	558	2,0	562	574	15	+/- 2,0mm
800111	TFL-600-15	SS304 / DIN 1.4301 - Glass Bead Blasted	598	2,0	602	614	15	+/- 2,0mm
801981	TFL-630-15	SS304 / DIN 1.4301 - Glass Bead Blasted	628	2,0	632	644	15	+/- 2,0mm



Length : 25 mm

Surface : Glass Bead Blasted

Material : AISI 304 / DIN 1.4301



Article Nr.	Description	Material	D1	WT	OD	D2	L	Tolerance
804176	TFL-060-25	SS304 / DIN 1.4301 - Glass Bead Blasted	57	1,5	60	73	25	+/- 2,0mm
804177	TFL-080-25	SS304 / DIN 1.4301 - Glass Bead Blasted	78	1,5	81	94	25	+/- 2,0mm
800620	TFL-100-25	SS304 / DIN 1.4301 - Glass Bead Blasted	99	2,0	103	115	25	+/- 2,0mm
803997	TFL-120-25	SS304 / DIN 1.4301 - Glass Bead Blasted	119	2,0	123	135	25	+/- 2,0mm
804178	TFL-140-25	SS304 / DIN 1.4301 - Glass Bead Blasted	135	2,0	139	151	25	+/- 2,0mm
803388	TFL-150-25	SS304 / DIN 1.4301 - Glass Bead Blasted	149	2,0	153	165	25	+/- 2,0mm
800161	TFL-175-25	SS304 / DIN 1.4301 - Glass Bead Blasted	174	2,0	178	190	25	+/- 2,0mm
801459	TFL-200-25	SS304 / DIN 1.4301 - Glass Bead Blasted	199	2,0	203	215	25	+/- 2,0mm
804179	TFL-224-25	SS304 / DIN 1.4301 - Glass Bead Blasted	219	2,0	223	235	25	+/- 2,0mm
802009	TFL-250-25	SS304 / DIN 1.4301 - Glass Bead Blasted	249	2,0	253	265	25	+/- 2,0mm
800340	TFL-280-25	SS304 / DIN 1.4301 - Glass Bead Blasted	276	2,0	280	292	25	+/- 2,0mm
800622	TFL-300-25	SS304 / DIN 1.4301 - Glass Bead Blasted	299	2,0	303	315	25	+/- 2,0mm
804180	TFL-315-25	SS304 / DIN 1.4301 - Glass Bead Blasted	311	2,0	315	327	25	+/- 2,0mm
802010	TFL-350-25	SS304 / DIN 1.4301 - Glass Bead Blasted	349	2,0	352	365	25	+/- 2,0mm
804181	TFL-400-25	SS304 / DIN 1.4301 - Glass Bead Blasted	398	2,0	402	414	25	+/- 2,0mm
804822	TFL-450-25	SS304 / DIN 1.4301 - Glass Bead Blasted	448	2,0	452	464	25	+/- 2,0mm
800546	TFL-500-25	SS304 / DIN 1.4301 - Glass Bead Blasted	498	2,0	502	514	25	+/- 2,0mm
807899	TFL-560-25	SS304 / DIN 1.4301 - Glass Bead Blasted	558	2,0	562	574	25	+/- 2,0mm
807786	TFL-600-25	SS304 / DIN 1.4301 - Glass Bead Blasted	598	2,0	602	614	25	+/- 2,0mm
807901	TFL-630-25	SS304 / DIN 1.4301 - Glass Bead Blasted	628	2,0	632	644	25	+/- 2,0mm

Jacob Flexible Connection / Ancillary Components

Adapter Flanges

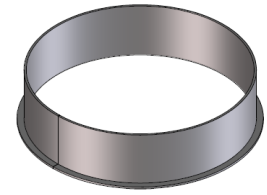
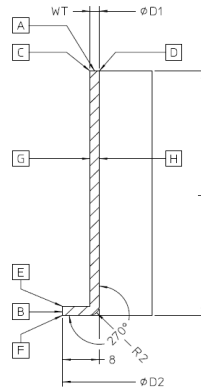
Size Table



Length : 55 mm

Surface : Glass Bead Blasted

Material : AISI 304 / DIN 1.4301



Article Nr.	Description	Material	D1	WT	OD	D2	L	Tolerance
800002	TFL-060-55	SS304 / DIN 1.4301 - Glass Bead Blasted	57	1,5	60	73	55	+/- 2,0mm
800004	TFL-080-55	SS304 / DIN 1.4301 - Glass Bead Blasted	78	1,5	81	94	55	+/- 2,0mm
800005	TFL-100-55	SS304 / DIN 1.4301 - Glass Bead Blasted	99	2,0	103	115	55	+/- 2,0mm
800006	TFL-120-55	SS304 / DIN 1.4301 - Glass Bead Blasted	119	2,0	123	135	55	+/- 2,0mm
800007	TFL-140-55	SS304 / DIN 1.4301 - Glass Bead Blasted	135	2,0	139	151	55	+/- 2,0mm
800008	TFL-150-55	SS304 / DIN 1.4301 - Glass Bead Blasted	149	2,0	153	165	55	+/- 2,0mm
800009	TFL-175-55	SS304 / DIN 1.4301 - Glass Bead Blasted	174	2,0	178	190	55	+/- 2,0mm
800010	TFL-200-55	SS304 / DIN 1.4301 - Glass Bead Blasted	199	2,0	203	215	55	+/- 2,0mm
800011	TFL-224-55	SS304 / DIN 1.4301 - Glass Bead Blasted	219	2,0	223	235	55	+/- 2,0mm
800012	TFL-250-55	SS304 / DIN 1.4301 - Glass Bead Blasted	249	2,0	253	265	55	+/- 2,0mm
800338	TFL-280-55	SS304 / DIN 1.4301 - Glass Bead Blasted	276	2,0	280	292	55	+/- 2,0mm
800013	TFL-300-55	SS304 / DIN 1.4301 - Glass Bead Blasted	299	2,0	303	315	55	+/- 2,0mm
800332	TFL-315-55	SS304 / DIN 1.4301 - Glass Bead Blasted	311	2,0	315	327	55	+/- 2,0mm
800014	TFL-350-55	SS304 / DIN 1.4301 - Glass Bead Blasted	349	2,0	352	365	55	+/- 2,0mm
800015	TFL-400-55	SS304 / DIN 1.4301 - Glass Bead Blasted	398	2,0	402	414	55	+/- 2,0mm
800016	TFL-450-55	SS304 / DIN 1.4301 - Glass Bead Blasted	448	2,0	452	464	55	+/- 2,0mm
800017	TFL-500-55	SS304 / DIN 1.4301 - Glass Bead Blasted	498	2,0	502	514	55	+/- 2,0mm
800018	TFL-560-55	SS304 / DIN 1.4301 - Glass Bead Blasted	558	2,0	562	574	55	+/- 2,0mm
800112	TFL-600-55	SS304 / DIN 1.4301 - Glass Bead Blasted	598	2,0	602	614	55	+/- 2,0mm
800019	TFL-630-55	SS304 / DIN 1.4301 - Glass Bead Blasted	628	2,0	632	644	55	+/- 2,0mm

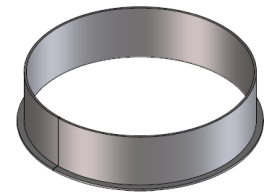
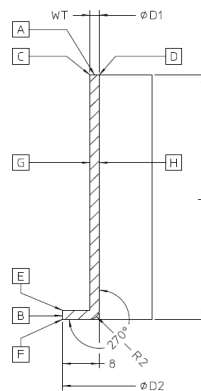


Length : 55 mm

Surface : Pickled and Passivated

Material : AISI 316 Ti / DIN 1.4571

Certificate : 3,1 Certificate Possible on Request



Article Nr.	Description	Material	D1	WT	OD	D2	L	Tolerance
802106	TFL-060-55_316_FSS316 / DIN 1.4571 - Pickled Passivated	AISI 316 Ti / DIN 1.4571	57	1,5	60	73	55	+/- 2,0mm
802107	TFL-080-55_316_FSS316 / DIN 1.4571 - Pickled Passivated	AISI 316 Ti / DIN 1.4571	78	1,5	81	94	55	+/- 2,0mm
800404	TFL-100-55_316_FSS316 / DIN 1.4571 - Pickled Passivated	AISI 316 Ti / DIN 1.4571	99	2,0	103	115	55	+/- 2,0mm
802108	TFL-120-55_316_FSS316 / DIN 1.4571 - Pickled Passivated	AISI 316 Ti / DIN 1.4571	119	2,0	123	135	55	+/- 2,0mm
802109	TFL-140-55_316_FSS316 / DIN 1.4571 - Pickled Passivated	AISI 316 Ti / DIN 1.4571	135	2,0	139	151	55	+/- 2,0mm
800696	TFL-150-55_316_FSS316 / DIN 1.4571 - Pickled Passivated	AISI 316 Ti / DIN 1.4571	149	2,0	153	165	55	+/- 2,0mm
802110	TFL-175-55_316_FSS316 / DIN 1.4571 - Pickled Passivated	AISI 316 Ti / DIN 1.4571	174	2,0	178	190	55	+/- 2,0mm
800615	TFL-200-55_316_FSS316 / DIN 1.4571 - Pickled Passivated	AISI 316 Ti / DIN 1.4571	199	2,0	203	215	55	+/- 2,0mm
802111	TFL-224-55_316_FSS316 / DIN 1.4571 - Pickled Passivated	AISI 316 Ti / DIN 1.4571	219	2,0	223	235	55	+/- 2,0mm
800539	TFL-250-55_316_FSS316 / DIN 1.4571 - Pickled Passivated	AISI 316 Ti / DIN 1.4571	249	2,0	253	265	55	+/- 2,0mm
800608	TFL-280-55_316_FSS316 / DIN 1.4571 - Pickled Passivated	AISI 316 Ti / DIN 1.4571	276	2,0	280	292	55	+/- 2,0mm
800228	TFL-300-55_316_FSS316 / DIN 1.4571 - Pickled Passivated	AISI 316 Ti / DIN 1.4571	299	2,0	303	315	55	+/- 2,0mm
800609	TFL-315-55_316_FSS316 / DIN 1.4571 - Pickled Passivated	AISI 316 Ti / DIN 1.4571	311	2,0	315	327	55	+/- 2,0mm
800697	TFL-350-55_316_FSS316 / DIN 1.4571 - Pickled Passivated	AISI 316 Ti / DIN 1.4571	349	2,0	352	365	55	+/- 2,0mm
802112	TFL-400-55_316_FSS316 / DIN 1.4571 - Pickled Passivated	AISI 316 Ti / DIN 1.4571	398	2,0	402	414	55	+/- 2,0mm
802113	TFL-450-55_316_FSS316 / DIN 1.4571 - Pickled Passivated	AISI 316 Ti / DIN 1.4571	448	2,0	452	464	55	+/- 2,0mm
800716	TFL-500-55_316_FSS316 / DIN 1.4571 - Pickled Passivated	AISI 316 Ti / DIN 1.4571	498	2,0	502	514	55	+/- 2,0mm
802114	TFL-560-55_316_FSS316 / DIN 1.4571 - Pickled Passivated	AISI 316 Ti / DIN 1.4571	558	2,0	562	574	55	+/- 2,0mm
802115	TFL-600-55_316_FSS316 / DIN 1.4571 - Pickled Passivated	AISI 316 Ti / DIN 1.4571	598	2,0	602	614	55	+/- 2,0mm
802116	TFL-630-55_316_FSS316 / DIN 1.4571 - Pickled Passivated	AISI 316 Ti / DIN 1.4571	628	2,0	632	644	55	+/- 2,0mm